



**The Features of
Concrete Batching Plant HZS120
信达机械HZS120搅拌站设备特点**

XINDA MACHINERY

XDM Concrete Batching Plant HZS120

信达机械HZS120搅拌站



Separate Weighing Aggregate Batcher

单独计量式骨料配料站

High capacity design, the aggregate storage hopper capacity is 20m³ each

大容量设计，每个骨料集料仓的容量为20m³

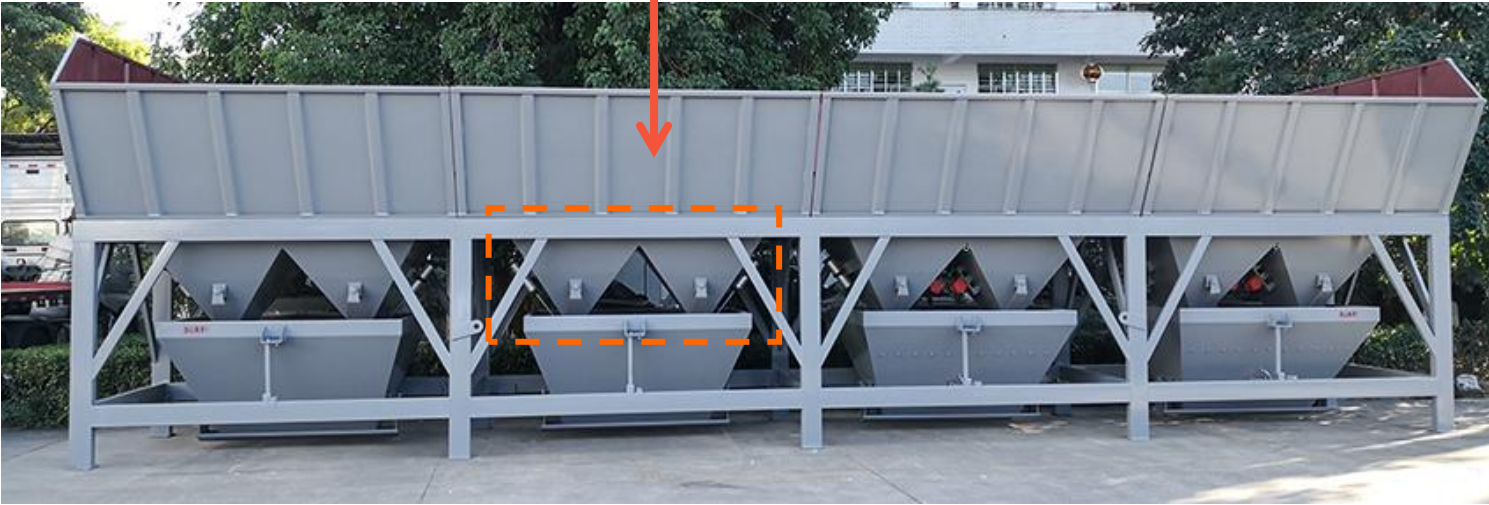
There is a separate weighing hopper under each aggregate storage hopper

每个骨料集料仓底下都有一个单独的计量斗

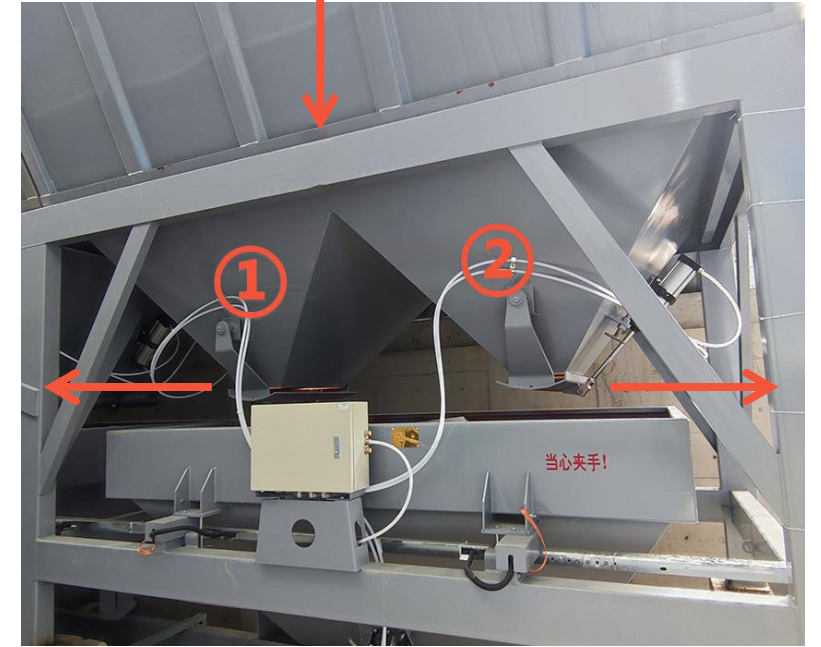
The hanging board of the batcher is formed by hydraulic forming machine, which can effectively improve the structural strength of the hanging board. 配料站围板采用冲压式一次成形，有效提高围板结构强度



Dual Outlet Design 配料站卸料门双开门设计



In order to ensure the accuracy of measurement, the aggregates in each bin are discharged to the weighing hopper twice, at the beginning both discharge doors are opened at the same time for rapid discharge, and then one of the discharge doors is closed when it reaches 95% of the preset value. , and close all discharge doors when the remaining 5% of the weighing is completed. 为保证计量的准确度，每个仓的骨料分快慢两次卸料至计量斗，第一次同时打开两个卸料门进行卸料，至95%预定值时关闭其中一个来完成剩余5%的称量。



Discharge door opens longitudinally, prevent materials spilling out or getting stuck more effectively. 卸料门纵向开启，更有效地防止骨料卡料或洒出仓外

The Best Way for Vibration of Fine Aggregate

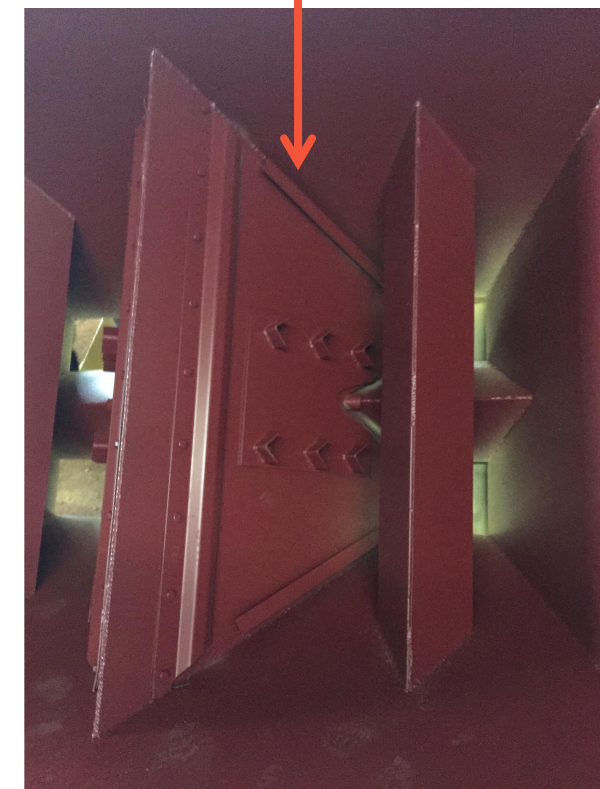
细骨料振动出料的最佳方式



Vibrator

All the **vibrator** using **OLI** brand(Italy brand), reliable and durable
所有振动电机均采用OLI品牌(意大利品牌), 可靠耐用

Vibrating-lining structure. The vibrator of sand hopper **vibrating the liner plate inside**, not vibrating the hopper wall directly, guarantee smooth discharge and durable
砂仓采用内振结构, 振动电机振动仓内内衬板, 而不是直接振动仓壁, 保证出砂顺畅, 又保证仓体经久耐用



The vibrating-lining inside

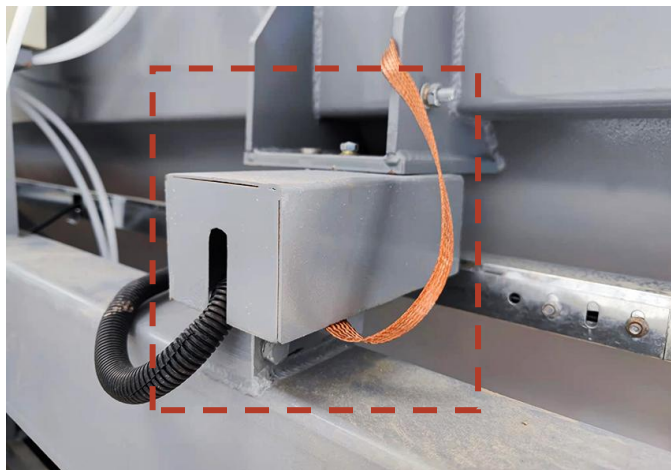


A polyurethane cleaner is added at the outlet of the flat belt conveyor of aggregate batcher, and the retaining hopper is changed to a movable vertical hanging type, so as to effectively control the impact force and discharge angle generated during aggregate feeding and reduce the belt deviation of the inclined belt conveyor caused by this
平皮带机出口处增加聚胺脂清扫器，挡料斗改为活动垂重型，有效控制骨料输送时产生的冲击力和下料角度，减少斜皮带机因此而造成的跑偏现象



Top Quality Load cell and Cylinder

高质量称重传感器和气缸



All weighing sensor(load cell) using **TOLEDO**(American brand), and equipped with dust cover and shielding wire to avoid lightning strikes. As everyone knows, TOLEDO is used for the weighing of checked baggage at the airport. 我们设备上所有的称重传感器均采用**TOLEDO**品牌（美国品牌），并加装了防尘罩和防雷击的屏蔽线众所周知，机场里面的托运行李的计量也都是用的**TOLEDO** 传感器



All cylinder using **AIRTAC** (Taiwan brand), Excellent dustproof, flexible operation 我们设备上所有气缸均采用**AIRTAC**(台湾品牌), 防尘性能优良，操作灵活



Belt Conveyor System

骨料皮带输送机



- Inclined angle up to 45 degree, stand small area.
- Equipped with recycled belt conveyor to reuse the leakage material.
- Equipped with maintenance aisle. Easy for maintenance and clean.
- Fully rain cover to reduce the dust emission and protect the belt.
- Equipped vibrators on the cover of return belt of the inclined belt conveyor, which can effectively reduce the sticky and speed up the aggregate recycle
- All the rollers are calibrated by the dynamic balancing machine

1. 皮带机倾斜角度最高可达45度，占地面积小
2. 配备骨料回收机，可回收使用洒漏的骨料。
3. 配备维修走道，易于皮带机的维护和清洁。
4. 全防雨罩，减少粉尘排放，并且保护皮带。
5. 下包封振动装置：斜皮带机下包封底部增加振动器，有效减少积料加快回料速度
6. 滚筒发货前都经过动平衡机校准处理



Aggregate holding hopper 骨料过渡料仓



- Aggregate holding hopper to make sure the continuous production, when the 1st batch mixing , the 2nd batch weighing at the same time, more efficiency.
 - Add a plastic curtain at the entrance of the holding hopper: improve the dust removal effect of the pulse dust filter
1. 骨料过渡料仓可以确保生产的连续性，当第一批料在搅拌时，第二批料的称量输送可以同时进行，效率更高。
 2. 过渡仓的进口处增加隔帘：提高脉冲吸尘机的除尘效果



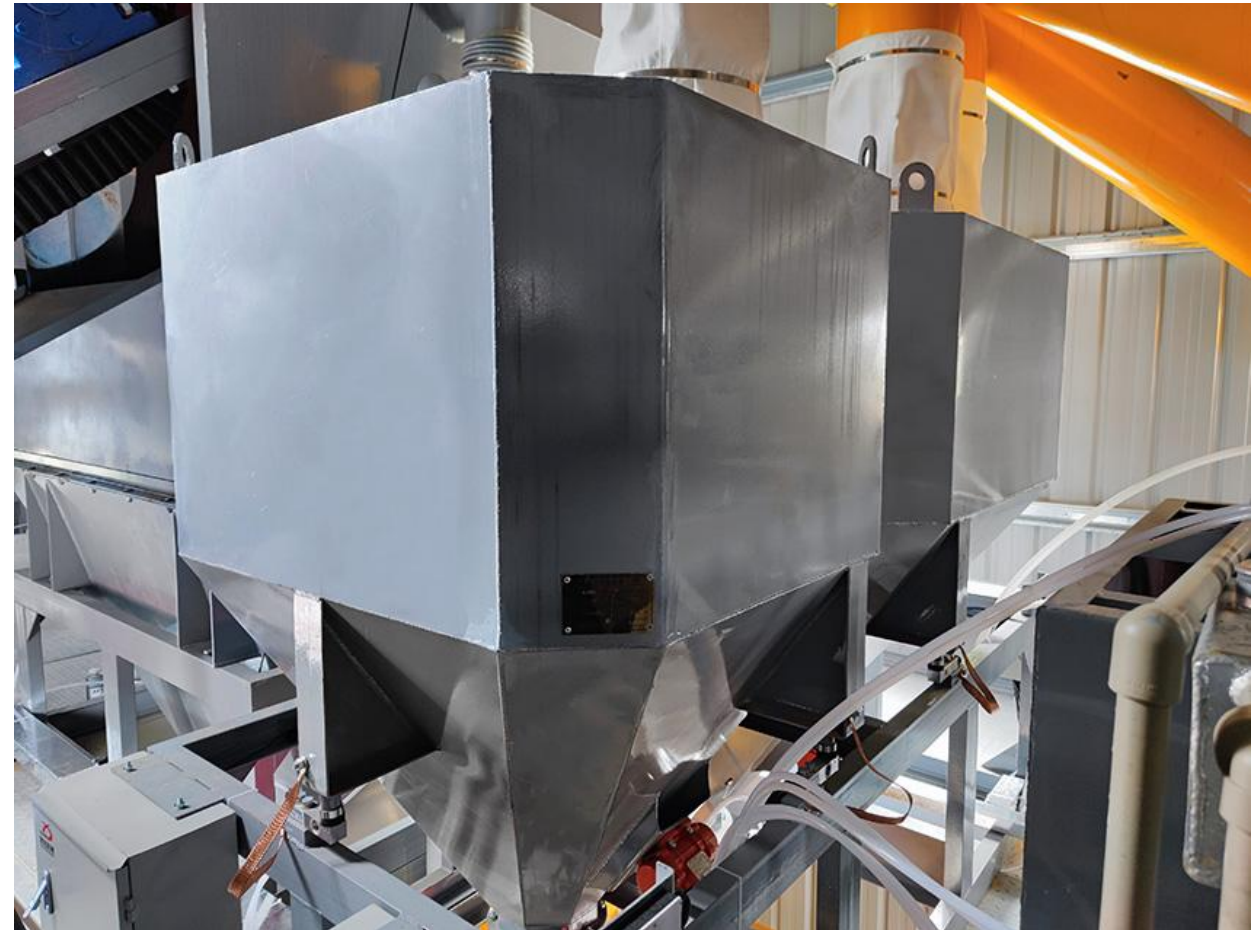
Cement and Fly Ash Weighing System

水泥和粉煤灰称量系统

- Reasonable permeability design can balance the pressure during filling.
 - Soft connection between screw conveyor and weighing bin to guarantee the weighing precision
 - Reasonable angle design on weighing bin, ensure the quick discharge without any sticks.
1. 合理的透气性设计可以平衡进料时的压力
 2. 螺旋输送机与称量斗采用软连接，保证称量精度
 3. 合理的称重斗角度设计，保证出料快速无粘料。



Cement weighing hopper discharge adopts **SICOMA** brand pneumatic butterfly valve
水泥称量斗卸料采用SICOMA品牌气动蝶阀



Water and Additives Weighing System

水和添加剂称量系统

- **Main and micro feeding design:** Water and additives are fed by pumping, and they are discharged out separately through two different diameter outlet tubes with pneumatic ball valves. In the initial stage of weighing, big diameter outlet tube are used for main feeding, and small diameter one (self-flow from liquid storage bags) are used for micro feeding in the final stage. So as to maximize the accuracy and stability of weighing.
 - Equipped with stainless steel tank and pump for additive to against rust and corrosion.
 - Additive stirring tank available, capacity ranged from 1000L to 5000L.
1. 精称储液包设计: 水和添加剂采用泵送方式进料, 并分别配置不同容量和卸液管径的气动球阀的精称储液包, 计量初期使用大口径管路, 末期采用储液包小口径管路, 从而最大限度保证称量的精确度以及稳定可靠。
 2. 添加剂称量斗和泵均采用不锈钢材质, 以防止生锈和腐蚀
 3. 可提供添加剂搅拌桶, 容量从1000L到5000L。

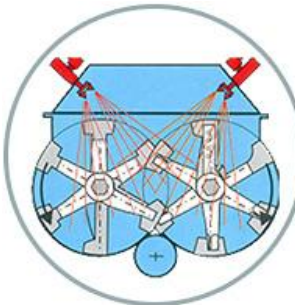
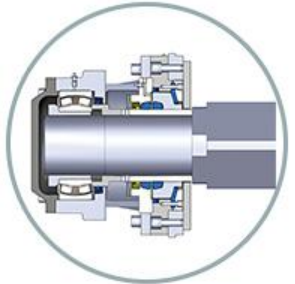


XDM Twin shaft Mixer JS2000(2m³ capacity)

信达机械自主品牌双卧轴搅拌机JS2000



- Perfect Multi-sealing system to avoid leakage and protect shaft ends.
完善的多重密封系统，避免漏浆，保护轴端
- Equipped with high-chromium wear-resistance cast blade and lining tiles, the continuously mixing can up to 70,000 times.
配备高铬耐磨搅拌叶片和衬板，连续搅拌可达70000次。
- Equipped with advanced automatic lubrication system, once fill for 5-7 days running.
配备先进的自动润滑系统，一次加注可运行5-7天。
- Multi-pipe water spraying to ensure even water distribution.
多管路喷水，保证布水均匀。



High precision processing on mixer shaft ends

桶体轴端镗床加工

The inner holes and end faces of the four shaft ends of the mixer body are processed with high precision on a double-sided CNC boring machine, so that the tolerance of the center of the hole diameter on both sides is controlled within 0.03mm, ensuring that the accuracy of the shaft end assembly can meet the requirements, and effectively extending the service life of the mixer

所有搅拌缸桶体在装配前都要上双面数控镗床对四个轴端的内孔和端面进行高精度加工，使两边的孔径中心度公差控制在0.03mm的范围以内，确保轴端装配时精度可达到要求，有效延长搅拌主机的使用寿命



Improvement of mixer cover

搅拌缸盖改进

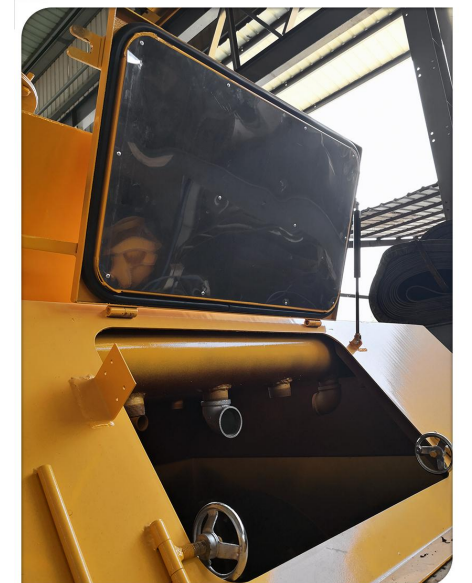
Modified the powder (cement/fly ash) feeding chute in oval shape, without any dead angle, so the dropping point of powder just in the middle of two shafts of the mixer, maximum to avoid the cement sticks on the shafts.

What's more, there is a rubber tube connect on the feeding chute to reduce the dropping height even touch the mixing blade to reduce dust emission.

Adopted 45°, 90° and three-way pipe nozzle to guarantee the liquid (water/admixture) can be sprayed evenly to any corner of the mixer.

Non embroidered steel plate is welded on the inner side of the observation port of the mixer cover to effectively reduce the possibility of material sticks. Even if there is material accumulation, it will not affect the opening of the observation port

1. 集料槽改为椭圆形斜管，下料无死角，料槽的椭圆出料口方向改为横向(与大轴平行)，落料点刚好是在两轴中间
2. 料槽的出料口还增加红胶管连接，有效降低下料高度，使粉尘的产生较少，且红胶管口可低至碰到搅拌叶片，运转时通过叶片碰撞胶管而得到清理效果
3. 在出水口增加45、90弯及三通接头，使下水方向随意可调
4. 搅拌缸盖观察口开门内侧加焊不锈钢板，有效减小积料可能，就算有积料也不影响观察门的打开



Fully automatic computer control system

全自动电脑控制系统

Most reliable and stable control mode: **SIEMENS PLC + SIEMENS TOUCH + Industrial PC.**

最可靠稳定的控制方式: 西门子PLC + 西门子TOUCH + 工控机

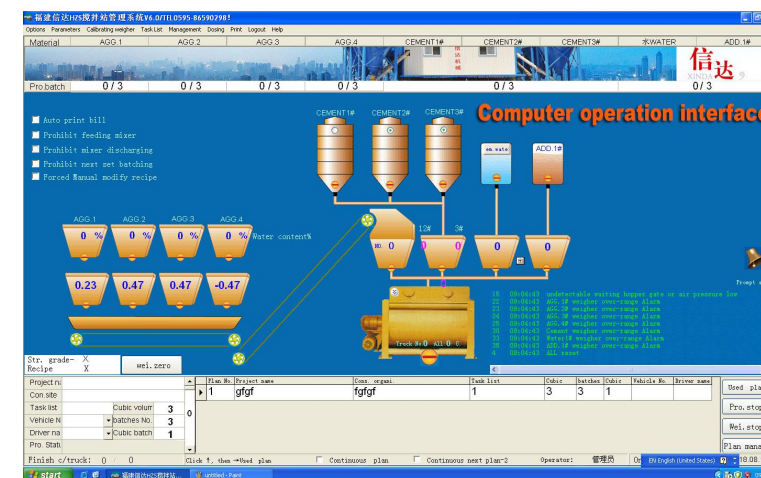
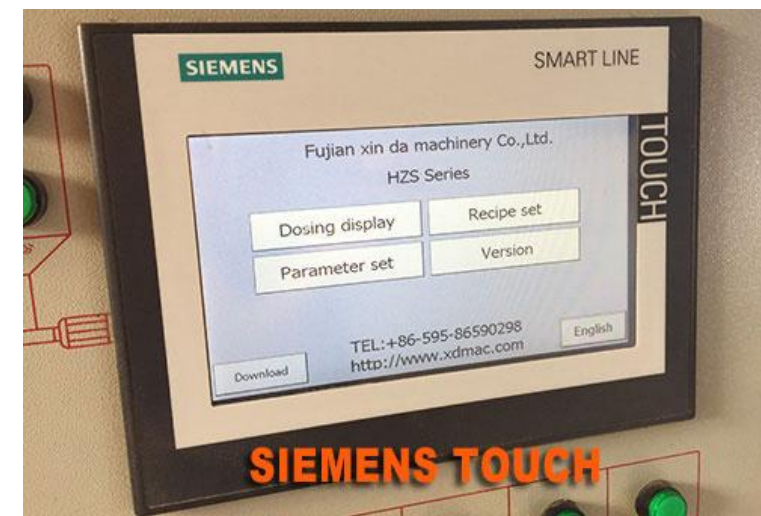
User-friendly operating system interface, simple operation and strong practicability

操作系统界面友好, 操作简单, 实用性强



- Main electrical components use **SIEMENS** brand, even the buttons on the operation panel
- All wires & cables are coded, easy to track and maintenance
- Permission limited to change the parameter.
- Intelligent management system for task tracking, printing and so on.
- Equipped with a WIFI USB in case need a remote support.
- A standby hard disc with programmer included.
- 主要**电器元件**采用**西门子**品牌，包括操作面板上的按键
- 每条电线和电缆均已编码，易于跟踪和维修
- 限制修改参数的权限
- 任务跟踪、打印等智能化管理系统。
- 配备无线网卡，可实现远程支持。
- 随机带有一个带有程序的备用硬盘。

▼ SIEMENS PLC ▼



Excellent environmental protection measures and Monitor system

优秀的环保措施和监控系统



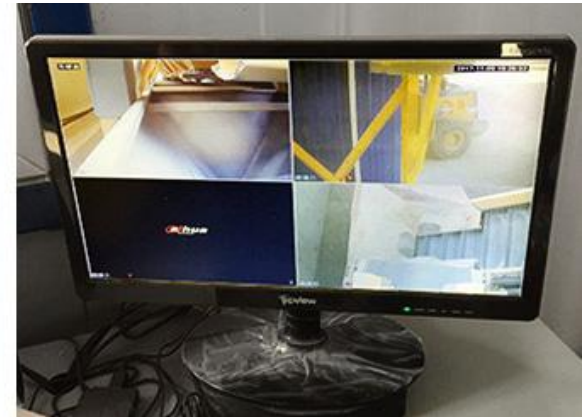
- ▶ **Environmental protection**
 - ✓ **External packing:** Cover the mixing tower and belt conveyor with colorful steel plate to prevent dust emission.
 - ✓ **Dust control system:** Equipped with 8m² impulse dust filter, collection efficiency up to 99.8%. Auto clean and reuse the dust, low maintenance cost.
- 环境保护**
- ✓ **外封:** 在混合塔和带式输送机上覆盖彩色钢板，防止粉尘排放。
 - ✓ **除尘系统:** 配备8m²脉冲除尘器，除尘效率达99.8%。自动清洁，粉尘回收利用，维护成本低。

Monitor system ▶

Equipped with multiple HD color monitors (HIKVISION), the condition of the mixing plant is monitored in real time on the display in the control room.

监控系统

配有多个高清彩色监控摄像头，在控制室的显示屏上实时监控搅拌站的情况。



Two layers of the covering of mixing tower

The covering (color steel plate) of the mixing tower is divided into upper and lower layers by the middle bending parts:

1. Convenient for the on-site hoisting of color steel plate
2. Increase the three-dimensional sense of the overall appearance and also enhance the strength of the structure

外封表面分层

将主楼外封（彩钢板）由中间折弯件分为两层：

1. 方便售后人员现场彩钢板吊装
2. 增加整体外观的立体感同时也增强骨架结构强度



Galvanized covering framework of mixing tower

The covering framework of mixing tower is made of galvanized C-shaped steel, which is fully removable and does not require any welding on site

镀锌外封骨架

主楼外封骨架采用镀锌C型钢，可实现完全可拆，在现场无需任何焊接

